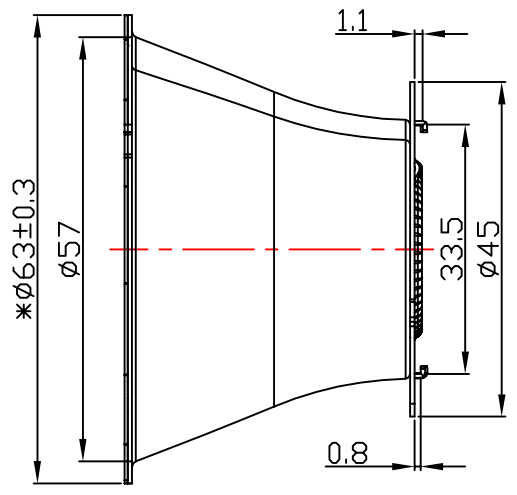
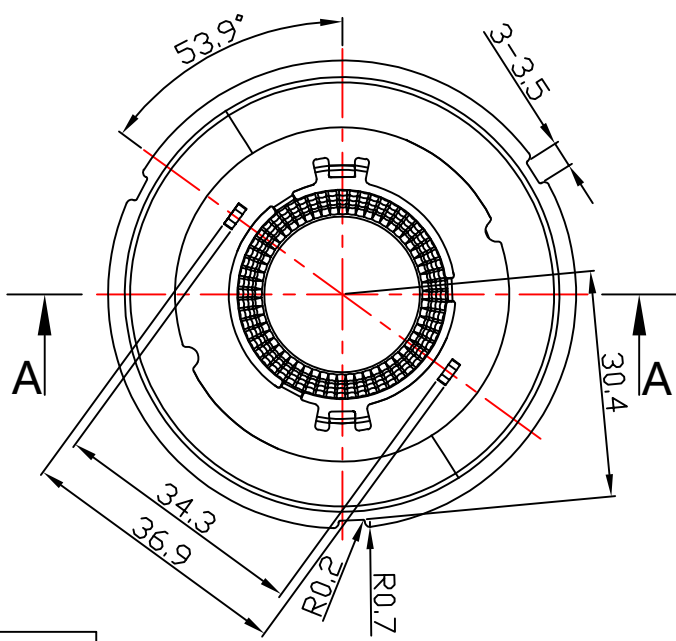
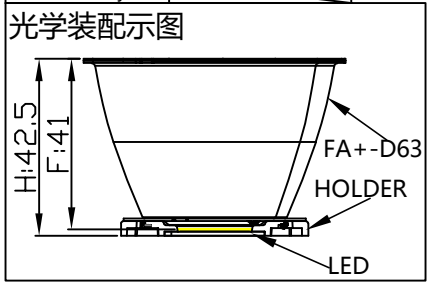


A - A



Light Source	LUMILEDS 1205
PlasticHolder	92.70.411.00
Metal Adaptor	
Design Angle	$25^\circ \pm 3^\circ$
Measured Angle	26°
Efficiency	




Technical requirements:
 1.**KEY CONTROL DIMENSION.
 2.Tolerances not noted are in accordance with the tolerance table.
 3.unmarked rounded corners Press for 3D.
 4.Surface without imprint, black spots, cracks, wrinkles and other poor.

PRODUCT BOM				
NO.	PRODUCT NAME	P/N:	QUANTITY	MATERIAL/FINISH
①	2-2641-L卡扣	97.77.073.00	1	T=0.6mm SUS301
②	2-2564-A	94.02.2564.000	1	T=0.6mm 1070AL/Andoizing
③	2-2565-A	94.02.2565.000	1	T=0.4mm High reflectivity aluminum(Mirror surface)

标记	处数	更改内容	签名	更改日期
MARK	NO.OF MODIF	MODIFICATIONS	SIGNED BY	MODIF. DATE
设计		制图	比例	1:1
DESIGNER		DRAWN BY	SCALE	
工艺		审核	视角	
TECHNICIAN		CHECKED BY	1st ANGLE PROJECTION	
批准		日期	页数	SHEET 1 OF 1
APPROVED BY		DATE(DD-MM-YYYY)	PAGE	
		18-02-2022		

DIMENSION TOLERANCE TABLE (UNLESS OTHERWISE STATED)						
> 0-5	> 5-30	> 30-90	> 90-150	> 150-250	> 250-400	> 400-700
±0.15	±0.2	±0.4	±0.5	±0.8	±1.5	±2

PUNCH TOLERANCE TABLE (UNLESS OTHERWISE STATED) (ANGLE)					
> 0-10	> 10-50	> 50-120	> 120-250	> 250-360	
±1°	±0.5°	±0.3°	±0.2°	±0.166°	


版本
VERSIONS
K

产品编码 PRODUCT CODE	91.02.2640.000
产品名称 PRODUCT NAME	2-2640-L
客户代号 CUSTOMER ID	NT
客户编号 CUSTOMER CODE	FA+-63-25D